



# St Anne's C of E Primary School

Newsletter—27th September 2024

Let you light shine. **Matthew 5:16**

## What has been going on in school:

- ◆ **Y6 Parent workshop.**
- ◆ **Macmillan coffee morning & afternoon.**
- ◆ **Y4 and Y5 forest schools.**
- ◆ **Y6 made blood & looked at a lambs heart!**
- ◆ **Reception have been learning to match objects.**
- ◆ **Y3 have been learning about botanical art.**

## Macmillan

Thank you to those who were able to attend our Macmillan coffee morning and afternoon on Friday. It was lovely to see so many parents and families attend. The children performed poems and songs which we hope you all enjoyed.

We are pleased to announce we raised £430!  
Thank you for all your donations.



## DIARY DATES

Date	Event
30th Sept	Individual and sibling photographs
1st Oct	Reception vision screening
2nd & 3rd Oct	SCARF Workshops HH Workshops—Y6
7th & 8th Oct	HH Workshops—Y6
9th—11th Oct	Y5-Y6 Residential
11th Oct	Break the Rules Day Positive Noticing Day
14th Oct	Parents Evening Three Peaks—Rivington (tbc)
14th—17th Oct	Scholastic Book Fair
16th Oct	HH Workshops—Y6
21st Oct	Half Term
28th Oct	School re opens
11th Nov	Open Evening for New Parents
11th Nov	Intra health flu vaccine
12th Nov	Tree Barn—Reception
5th Dec	Youth Zone—Juniors
11th Dec	Windmill Farm—Infants
12th Dec	Christmas Dinner & Jumpers
12th Dec	Whole school trip to watch Snowman performance
13th Dec	Dojo Parties
17th & 18th Dec	Infants Nativity
19th Dec	Juniors Christmas Carol Concert
19th Dec	Infants Christmas Party
20th Dec	Juniors Christmas Party

Notes to remember:  
School starts at 8.45am please make sure your child is here

Notes to remember:  
Please ensure your child brings their reading book to school every day.

**Shine your light & Stars  
of the week award**

**Reception:**

*Thomas & Julia*

**Year 1**

*Pixie & Beau*

**Year 2:**

*Josie & Chikamso*

**Year 3:**

*Nathan & Mia S*

**Year 4:**

*Ruby & Darcie*

**Year 5:**

*Ireni & Olivia*

**Year 6:**

*Layla & Freya*

**Best Class Attendance**

**Year 5 100%**

A huge well done to you all and keep up the good attendance!

**Whole School attendance**

Overall schools attendance is **95%**

A high level of attendance gives children the best opportunity to learn and develop new skills, make better progress both socially and academically and have the best chance of success!

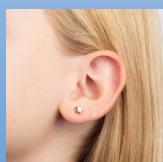
Please make sure you are on time for school, lateness affects your attendance marks.

**Do I need to keep my child off school?**

<b>Chicken Pox</b> At least 5 days from onset of rash and until all spots have crusted over	<b>Conjunctivitis</b> No need to stay off but school or nursery should be informed	<b>Diarrhea &amp; /or Vomiting</b> 48 hours from last episode	<b>Respiratory Illness</b> (e.g. colds & flu) Can return when no longer have a high temperature and well enough	<b>Glandular Fever</b> No need to stay off but school or nursery should be informed
<b>Hand, foot &amp; mouth</b> No need to stay off if well enough, but school or nursery should be informed	<b>Impetigo</b> Until lesions are crusted & healed or 48 hours after commencing antibiotics	<b>Head Lice</b> No need to stay off but school or nursery should be informed	<b>Measles</b> 4 days from onset of rash	<b>Mumps</b> 5 days from onset of swelling
<b>Scarlet Fever</b> 24 hours after commencing antibiotics	<b>Scabies</b> Until after first treatment	<b>Slapped Cheek</b> No need to stay off but school or nursery should be informed	<b>Threadworms</b> No need to stay off but school or nursery should be informed	<b>German Measles (Rubella)</b> 5 days from onset of rash
<b>Tonsillitis</b> Can return when no longer have a temperature and well enough, school or nursery should be informed	<b>Whooping Cough</b> 48 hours after commencing antibiotics	Use this guide to find out when they should stay off, and when they can go back if they are well enough to do so.		

**Earrings and Jewellery**

Just a polite reminder that children must only wear studded earrings. No jewellery is allowed to be worn.



**ASDA Cashpot for Schools**

Please sign up if you can to help raise funds for St Anne's—it is quick and easy!

Your support has raised **£161.47** so far.

There are **60** days left...

Thank you.

